



5th Biennial Field Conference, AAPG-MCS

***The Paleozoic Seas of the Ozark Dome  
– Depositional Environments, Sequence Stratigraphy, and  
Potential Reservoirs for Natural Resources***

**Schedule of Events**

10:00 AM on Friday, October 14 and continue through 3 PM on Sunday, October 16, 2022.

**Friday, October 14, from 10:00 AM to 7:00 PM, at Hasselmann Alumni House, Missouri S&T**

- Student poster presentations and competitions, and informal job and university interviews (10 AM to 7 PM)
- Oral presentations and keynote speakers (1-5 PM)
- Guided tours of department home at McNutt Hall by student organizations and faculty members, real-time seismological observatory, and mineral collections and displays (at selected intervals between 10 AM to 5 PM)
- Ice breaker and guest speakers (to be announced; 5-7 PM)

|                                  |  |   |
|----------------------------------|--|---|
| 12-2 pm                          | Council Meeting (# of people and location TBD)   |   |
| 2-4 pm (20 minutes each speaker) | <p>Jamie Woolsey</p> <p>David Borrok, dean and geochemist</p> <p>Dr. Cheryl Seeger, senior geologist, Missouri Geological Survey</p> <p>Bob Hemmann</p> <p>Speaker from MST rock mechanics research center</p> <p>Wan Yang</p> | <p>President's Welcome</p> <p>Dean's welcome</p> <p>General lower Paleozoic geology in St. Francois Mtn. area</p> <p>Zinc-lead belt geology and exploration</p> <p>Petroleum engineering research</p> <p>Field excursions</p> |
| 4-5 PM                           | Mike Party and rep from AAPG Headquarters  | Petroleum history and state of the industry   |
| 5-7 PM                           | Ice breaker, poster viewing, cash bar, hors d'oeuvre   |   |

Student posters  
On-site recruitment



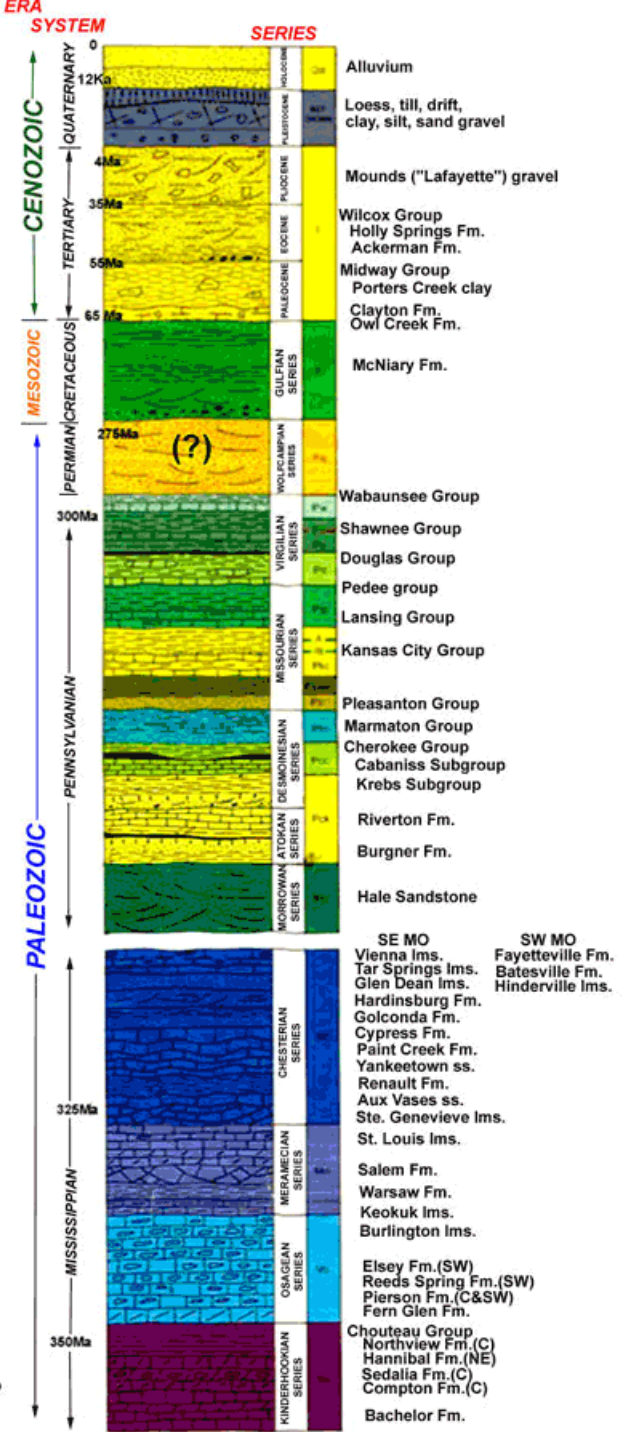
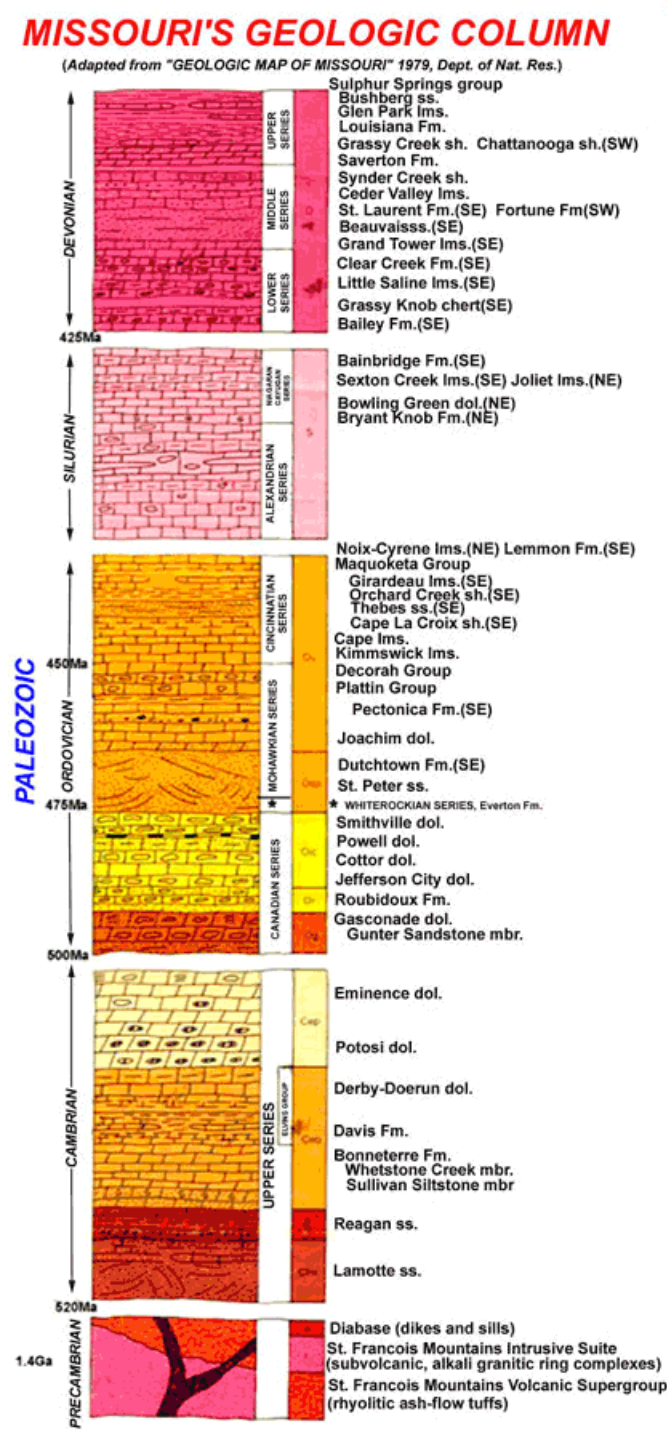
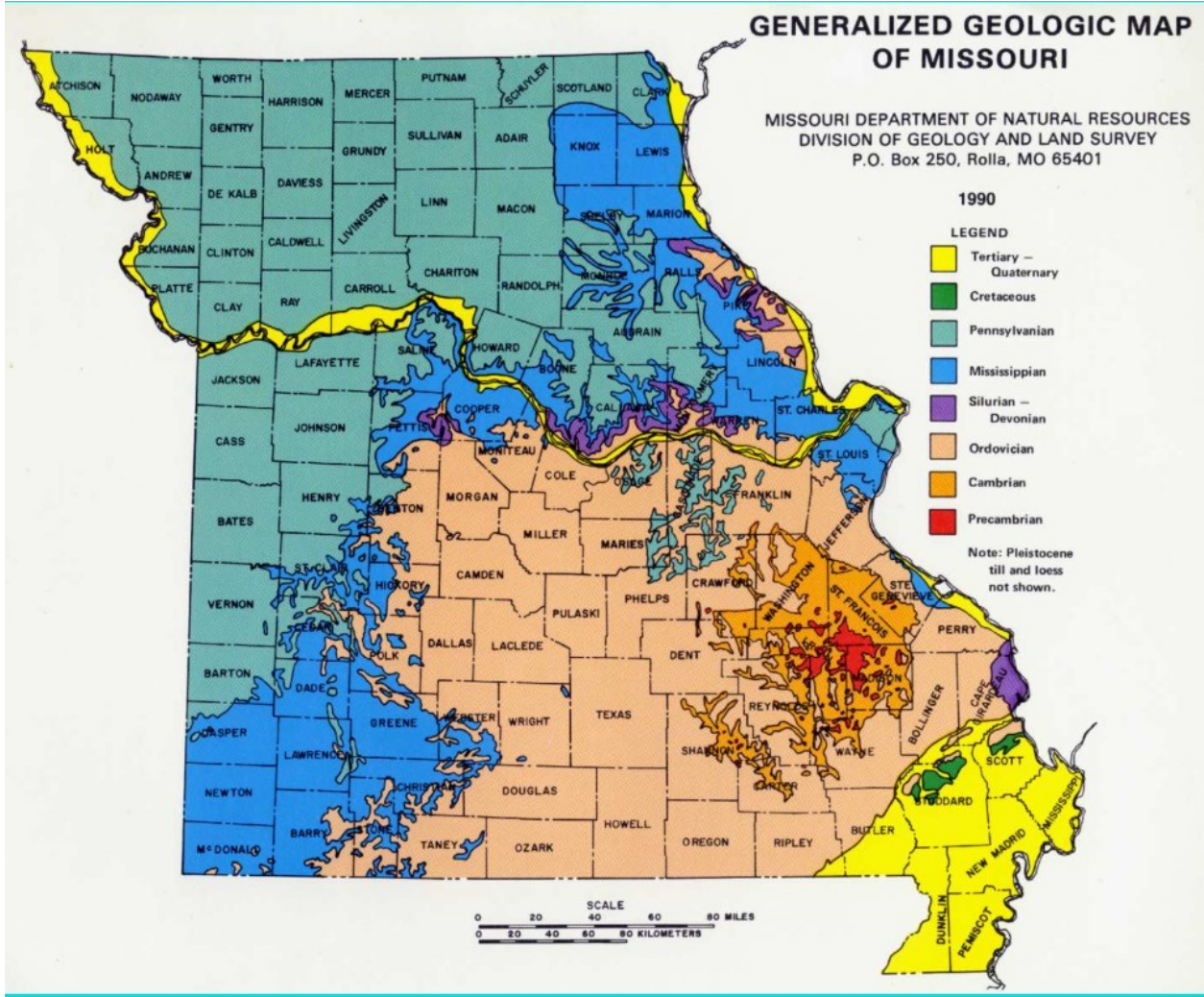
# Field days – Saturday and Sunday, October 15 and 16



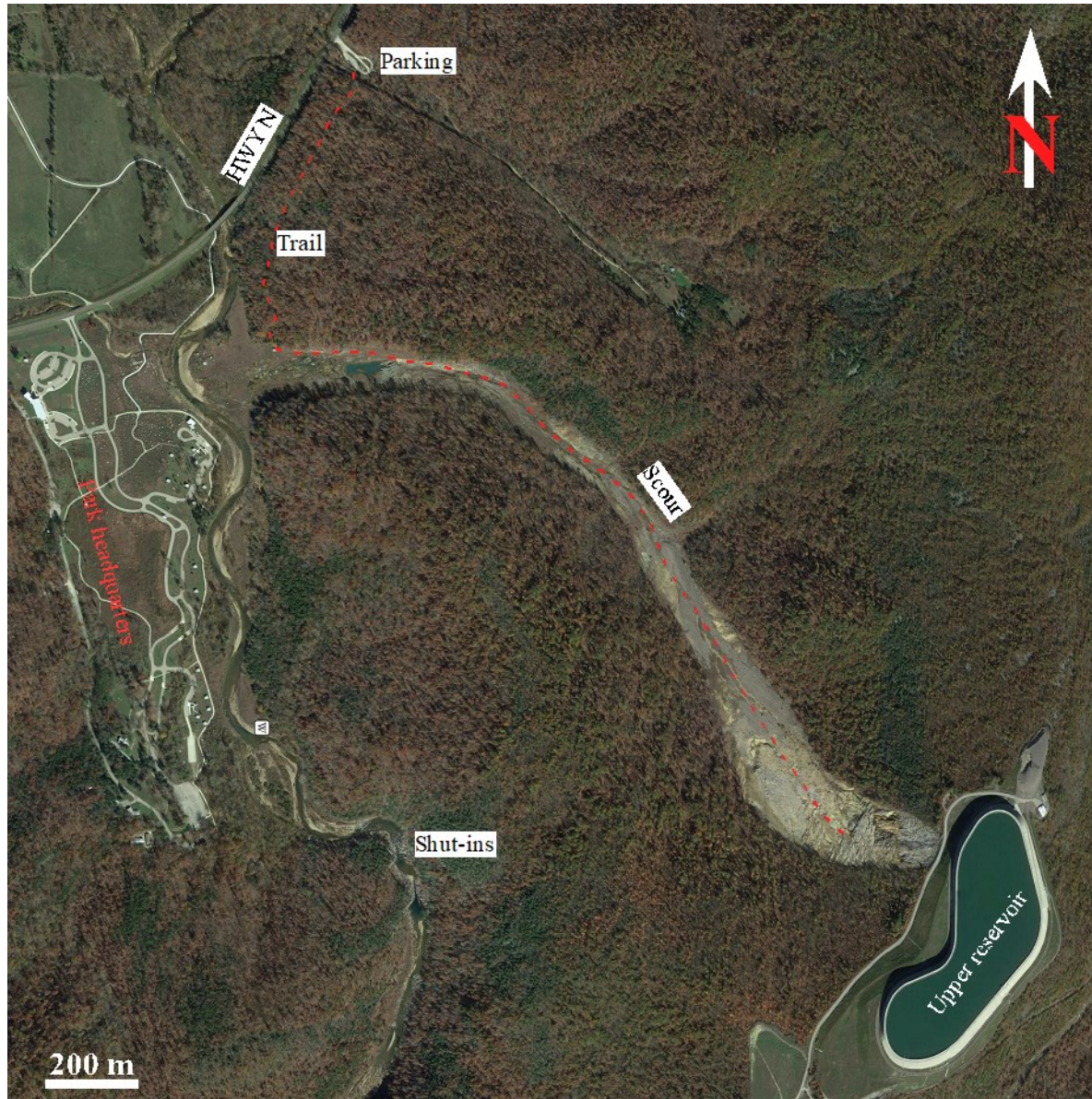
# **Saturday, October 15, Field Day 1, from 7:30 AM to 5 PM**

- Stop 1 – Scour Trail, Johnson’s Shut-In State Park to trace upstream the great dam failure of the Upper Taum Sauk Reservoir in December 2005, which left a trail of dramatic sedimentary and morphological records and stories, including the exposed lower Paleozoic stratigraphy and modern sedimentology formed by the floods.
- Stop 2 – Shut-ins trail. Johnson’s Shut-In State Park
- Alternative stops
  - 1) Elephant Rock State Park to observe the basement granite
  - 2) The nonconformity and lower Cambrian Lamott Sandstone and Bonneterre Formation along Highway 72 near Acadia, Missouri.
- Box lunch
- 7–9 PM – Group BBQ dinner in Lions Club Park, Rolla







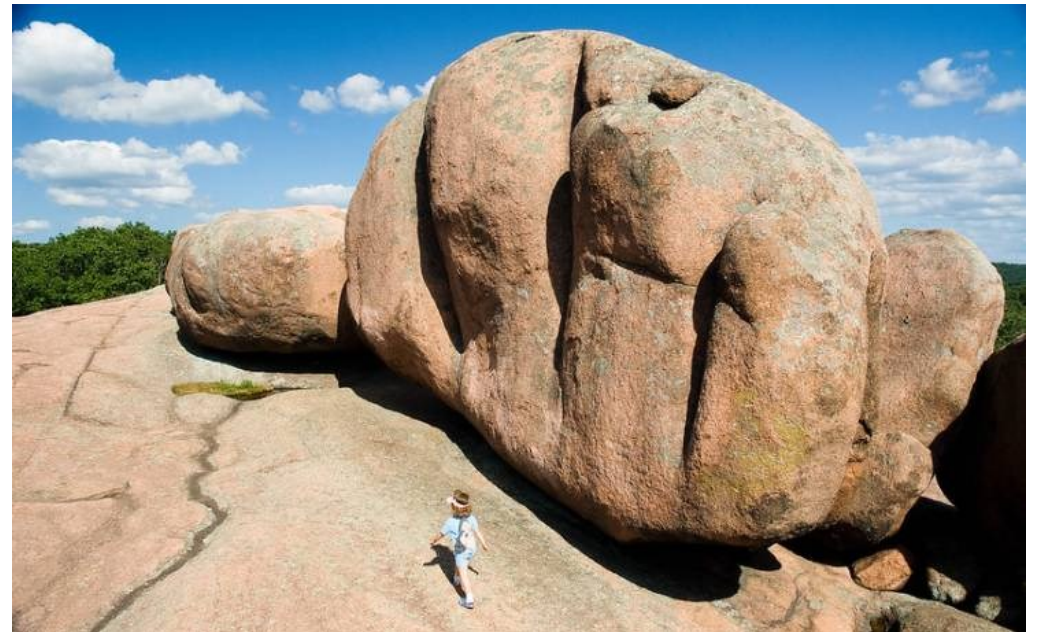


From Wronkiewicz & Seeger





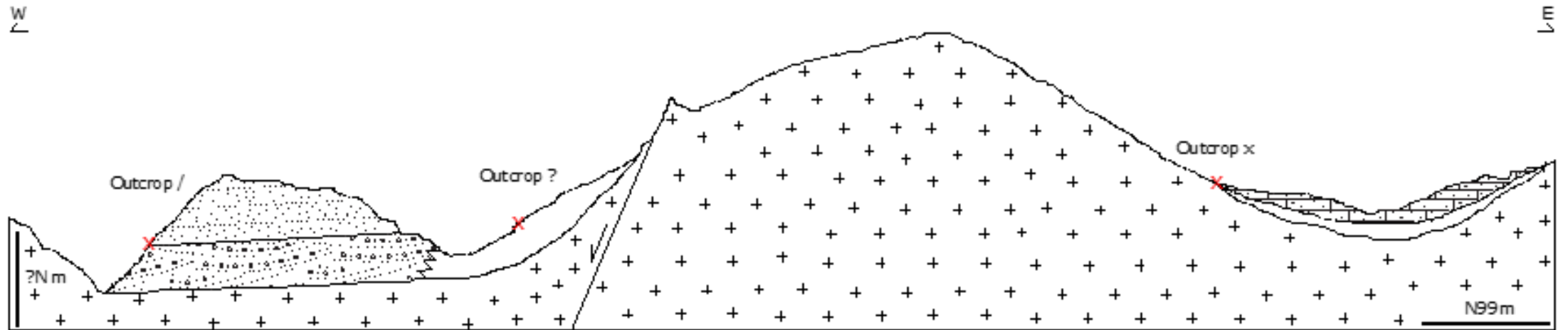
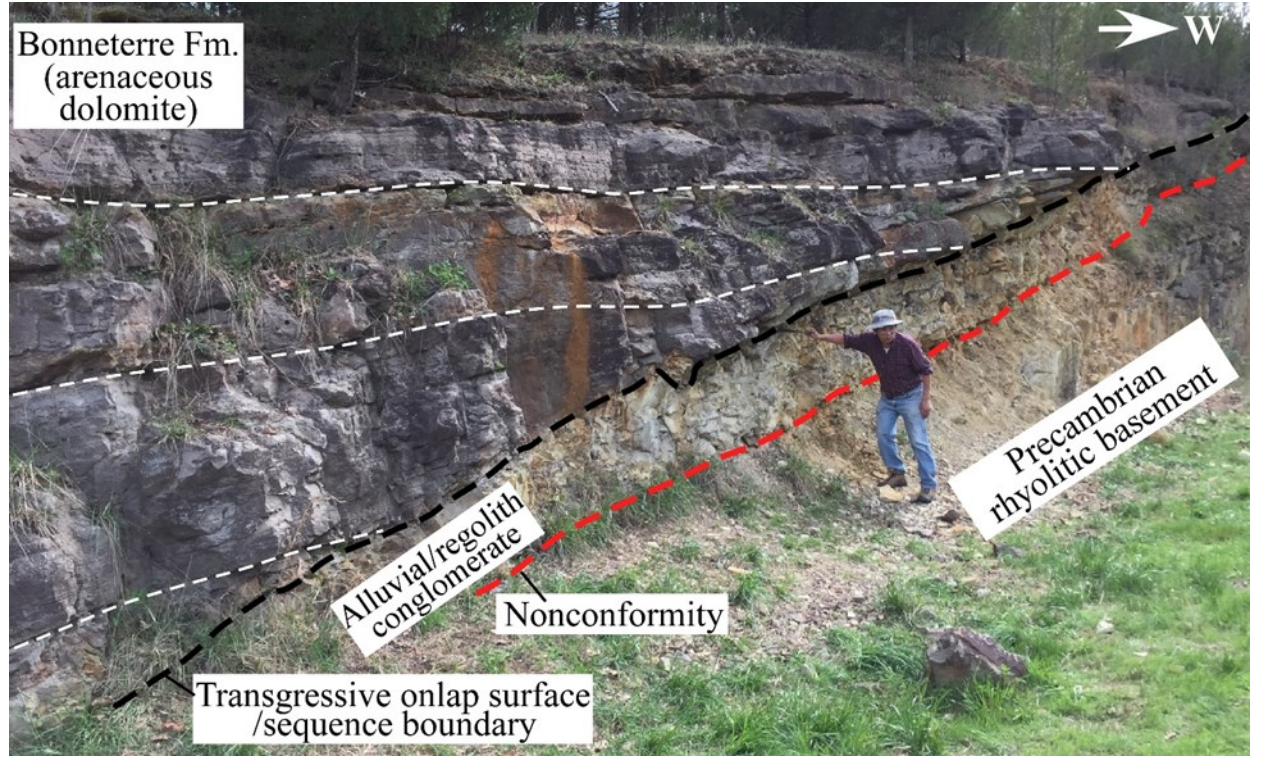
From Wronkiewicz & Seeger







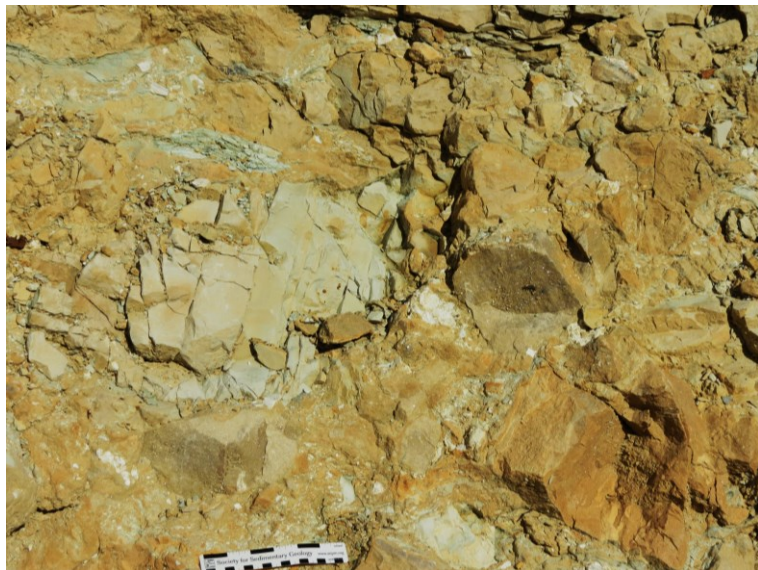
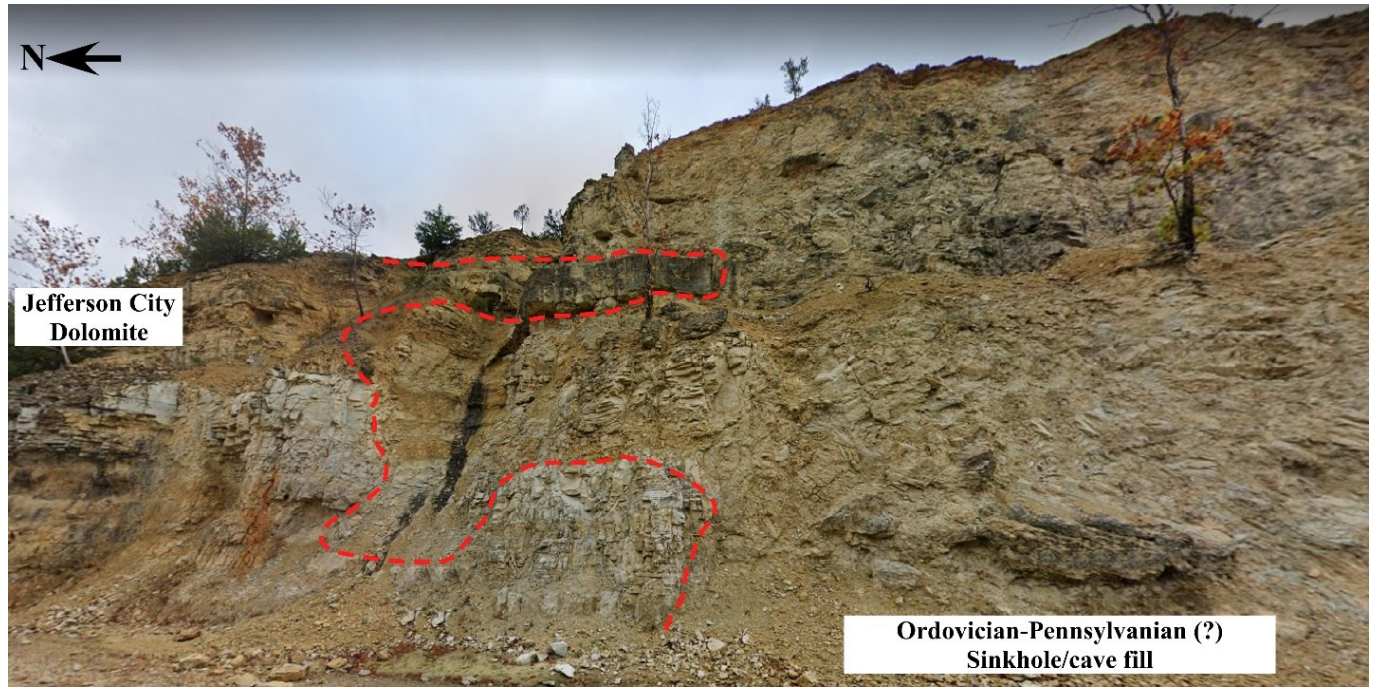




# **Sunday, October 16, Field Day 2, from 8 AM to 3 PM**

- Stop 3 – Ordovician Jefferson City Dolomite and ancient sink holes along HWY 63 6 miles north of Rolla
- Stop 4 – Gasconade Dolomite - Rubidoux Sandstone – Jefferson City Dolomite along the frontage road of I-44 in Rolla, to observe the boundary between the formations, peritidal carbonate cycles, and sedimentary structures and stratal geometry of beach-shoreface quartz arenite
- Box lunch
- End of conference

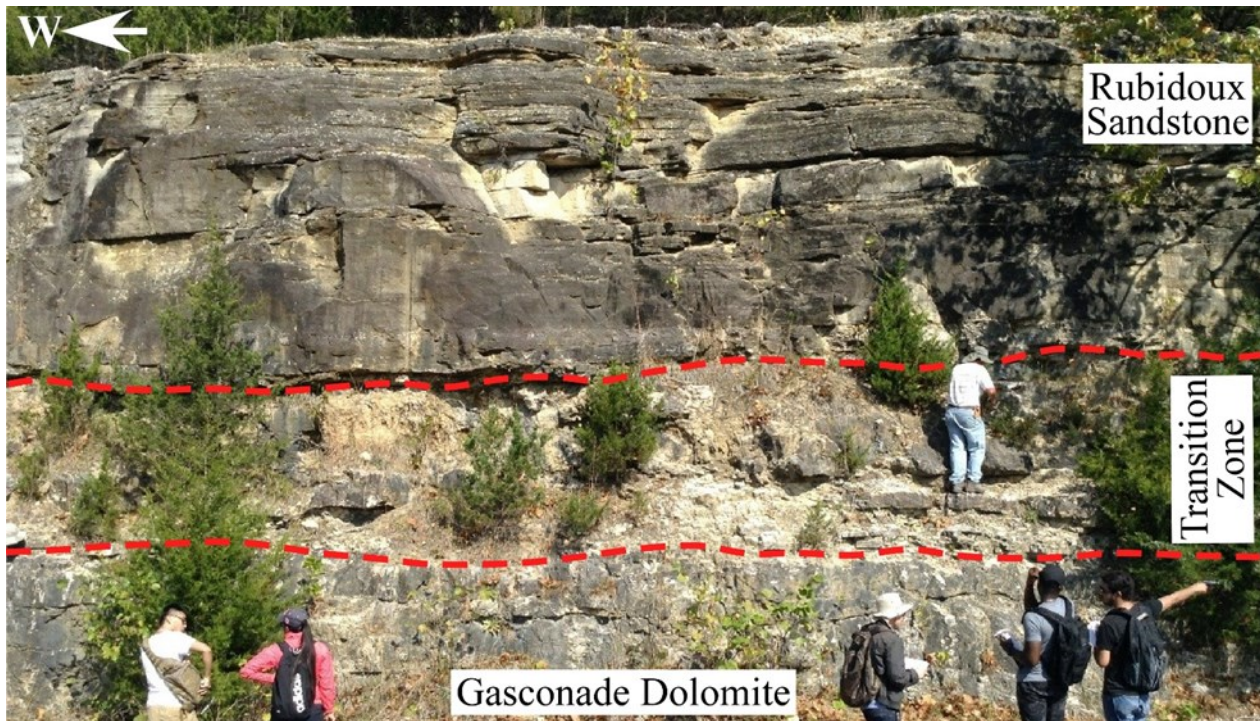














## **Registration deadline: 5 PM, September 9, 2022**

|  |              |
|--|--------------|
| <b>Professional</b>                            | <b>\$325</b> |
| <b>Faculty</b>                                 | <b>100</b>   |
| <b>Student</b>                                 | <b>\$50</b>  |
| <b>Spouse/Guest</b>                            | <b>\$75</b>  |
| <b>Friday Symposium and Ice Breaker only</b>   | <b>\$50</b>  |
| <b>Saturday Night Group Dinner only</b>        | <b>\$40</b>  |
| <b>Vendor/Exhibitor Personnel Registration</b> | <b>\$145</b> |
| <b>Exhibit Space</b>                           | <b>\$300</b> |

- Changes to your registration must be made in writing by e-mail to Dr. Wan Yang ([yangwa@mst.edu](mailto:yangwa@mst.edu)).
- Cancellation policy – A fee of \$75 will be charged for all cancellations made by September 15. No REFUNDS will be issued after September 15.
- Methods of payment – PayPal or by personal check.



# **Accommodations**

Rolla has tens of national and local hotels.

**1. Hampton Inn Rolla**

**2. Days Inn by Wyndham Rolla**

**3. Best Western Coachlight**

**4. Fairfield Inn & Suites by Marriott Rolla**

**5. Holiday Inn Express & Suites Rolla**

**6. Comfort Suites**

**7. Baymont by Wyndham Rolla**

# Activities for Spouses and Guests



**St. Games Winery  
Lucky House**



# **Sponsors**

**We are grateful for the sponsorship from the following individuals, companies, and organizations**

**Michael (Mike) Party** of Beryl Oil and Gas L.P. (\$10,000)

**Department of Geosciences and Geological and Petroleum Engineering,**  
Missouri University of Science and Technology (\$1,500).

**Energetic Materials, Rock Characterization, and Geomechanics Mechanics Research Center,** Missouri University of Science and Technology (\$500)

Contact for Dr. Wan Yang for information on sponsorship. Your support for the conference is appreciated.



## Contact

Wan Yang

Geology and Geophysics Program

Department of Geosciences and Geological and Petroleum Engineering

Missouri University of Science and Technology

Rolla, MO 65409.

E-mail: [yangwa@mst.edu](mailto:yangwa@mst.edu)

Phone: 573-341-6234 (office)

573-202-9237 (cell)

**<https://ggpe.mst.edu/aapg/>**

